



Finest Art Materials
Made in Germany



In 1919 Fritz Mußgueller and Adam Klebes founded the company KUM. Later, Dr. Werner Lüttgens took over the company. Today, KUM remains family owned in its third generation and is managed by Dr. Fritz Lüttgens and Patrick Becker.

KUM is the oldest still existing manufacturer of pencil sharpeners in the world. Besides our stationery range we offer products for artists with the worldwide known KUM quality standards.

During the last 10 years we expanded our range of high quality products with outstanding products for artists.



KUM® GmbH & Co. KG

Essenbacher Straße 2
91054 Erlangen, Germany

Phone: +49 (0) 9131 8268-0
Mail: customer-service@kum.net

Office Hours
Monday - Thursday 08:00-16:15
Friday 08:00-12:00



KUM® BRUSHES

The combination of highly skilled labor with the use of only the finest material available ensure the high quality, durability and use-characteristics of the KUM® Brushes. Besides this, KUM works in cooperation not only with the best brush makers but, additionally, with a wide range of artists that help us to develop the brushes that the artists are looking for.

We are very happy about the great collaborations that we have and we are looking forward to introduce to you the completely new and highly innovative products that we have developed together.

All of our artist brushes are completely handmade in Germany.

The wood that we use for the handles all comes from FSC Certified domestic forests. No tropical woods are used! The handles do not contain formaldehyde, lead, cadmium or other toxins according to DIN 53160. The handles are sweat and saliva resistant.

FRENCH AQUA

soft washes
with high
color flow

soft response
extreme high capacity
low shape recovery

KUM® BRUSH CHARACTER OVERVIEW

All brush lines positioned by feel, control and material behavior



FADED

balanced
control with
more freedom

MEMORY POINT

controlled
precision and
versatility

WOOD LINE

defined control
with slightly
firmer Memory
Point fibres

FJALL

very firm
fibres for
pasty paint

firm resistance
high shape recovery
textured strokes

Shape recovery - describes how reliably the brush returns to its defined shape after a stroke.
Fibre firmness - indicates the resistance of the fibres when working with fluid or pasty paint.
Capacity - refers to how much water and pigment the brush can hold.





KUM® FADED®

-Synthetic brushes for watercolor excellence

Handmade perfection from Germany

The KUM Faded brushes represent the pinnacle of craftsmanship, designed and produced entirely by hand in Germany. Their precision and performance make them a tool of choice for watercolor artists who demand excellence.

Innovative high-tech fibers

Crafted from a blend of two high-tech synthetic fibres, these brushes combine the best of both worlds. A carefully balanced mix of softer fibres with varying diameters is paired with a specialized, heat-treated stiffer fibre. Together, they create a perfect harmony that gives the brush its exceptional capacity, smooth color release,

and precise control. This innovative fibre blend makes these brushes ideal for watercolor painting, as they represent a true breakthrough in brush technology. While the industry often focuses on mimicking either Kolinsky or squirrel hair, we have developed a specialized synthetic mix that offers artists unparalleled versatility.



special mix of
fibre diameters



special fibre
blend



moderate shape
recovery



soft-medium
resistance



Elegant and timeless design

With their sleek matte black handles, KUM Faded brushes embody elegance and simplicity. The minimalist design not only looks professional but also feels comfortable in hand, allowing artists to focus solely on their creativity.

A must-have for watercolor artists

KUM Faded brushes are a versatile and indispensable addition to any watercolor toolkit. Their innovative construction and superior performance set them apart, making them an essential choice for artists striving for perfection in their work.





FADED ROUND

The perfect balance between flexibility and stability characterizes these round brushes. They offer precise control for fine details and smooth transitions, while providing enough versatility for larger areas and dynamic techniques.

Nr	0	2	4	6	8	10	12	14	16
Hair length mm	8	11	14	18	22	25	30	30	35
Ø in mm	1,8	2,4	3	4	5,4	6	7	7,8	9,5



FADED RIGGER | LINER

The long fibers of these brushes make them perfect for drawing extremely long and even lines. They enable precise and continuous color application without losing shape.

Nr	Liner		Rigger
	0	2	3
Hair length mm	17	15	30
Ø in mm	1,4	2	2,6



FADED SLANTED

With their slanted cut, these brushes enable precise, controlled strokes and details. The flat side is ideal for larger areas, while the brush tip enables precise edges and corners to be shaped.

Nr	6	10
Hair length mm	9/19	13/24
Width in mm	6,3	9,3



FADED FLAT

The edge can be used to paint thin, precise strokes, while the flat side enables soft color gradients and gentle transitions. They are ideal for larger areas and backgrounds, while mastering precise corners and fine lines with ease.

Nr	2	4	6	8	12	16	20
Hair length mm	8	9	9	12	14	19	23
Width in mm	3,2	4,5	6	8,4	11,8	15	17



FADED FRENCH ROUND

With their soft fibres, these brushes are perfect for soft color transitions and gentle washes. The shape allows for seamless blending, ideal for soft gradients and flowing effects in watercolor techniques. The fine tip also enables controlled application in detailed areas.

Nr	4	6	8
Hair length mm	20	23	26
Ø in mm	4	6	8



FADED FRENCH RIGGER

With its long bristles and finely pointed tip, this brush is ideal for fluid washes and long, seamless strokes. Its elongated shape allows for exceptional water and pigment absorption, enabling uninterrupted color flow and smooth transitions. The fine tip makes it possible to paint fine details, but also larger, expressive areas with ease.

Nr	4	6
Hair length mm	30	35
Ø in mm	4	6,5



∞ KUM® Memory Point® Handmade in Germany
EAN 40 64900 05153 7

12 KUM® Memory Point® Handmade in Germany
EAN 40 64900 04888 9



KUM® MEMORY POINT®

-Synthetic brushes for the highest demands

Exclusively developed high-tech fibers

The KUM® Memory Point® brushes are crafted with advanced synthetic fibers designed exclusively for KUM®. These fibres surpass traditional synthetic materials in performance and innovation, offering features tailored to meet the specific needs of artists.

Perfectly shaped brush tip

The Memory Point® brushes have perfectly shaped tips that ensure precise application with all brush sizes. Whether for intricate details or delicate strokes, the refined tip allows for exceptional control and accuracy.

Outstanding elasticity

The high-tech fibres used in these brushes ensure excellent elasticity. Even after repeated use, the brush tip reliably returns to its original shape. This resilience ensures long-lasting performance that maintains precision even with intensive use.



special mix of
fibre diameters



sharp fibre
cone



high shape
recovery



medium
resistance



High absorption and storage capacity

The Memory Point® brushes have been developed for both fine details and large-area work and are characterized by very good paint absorption and release. The brush head consists of filaments with different diameters, which minimizes empty spaces and improves paint storage. The textured surface of the fibres enlarges the surface area for optimal paint absorption and enables smooth color transitions and even coverage.

Shape retention through heat treatment

The “memory” capability of these brushes ensures consistent performance. A special heat treatment allows the fibres to return to their exact shape after each stroke. This allows artists to switch effortlessly between fine and broad lines with a single brush, depending on the pressure applied.

Enhanced for artistic precision and versatility

The combination of elasticity, shape retention and superior color storage capacity makes Memory Point® brushes an indispensable tool for artists. From detailed patterns to seamless color gradients, these brushes deliver professional results and make every stroke count.

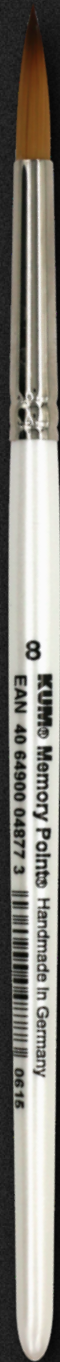




A glimpse inside

This cross-section shows the craftsmanship behind our brushes. The fibers merge seamlessly into the ferrule, ensuring maximum stability and durability. This careful construction not only prevents the fibres from tearing, but also improves the brush's performance and ensures consistent precision with every stroke.

A hallmark of true quality.



MEMORY POINT ROUND

The smallest details can be realized with the fine brush tip. When pressure is applied, the brush widens, which means that wide lines can also be drawn. If the pressure is reduced again, the brush jumps back into its original shape. This makes the round version particularly suitable for quick transitions from fine to thick lines.

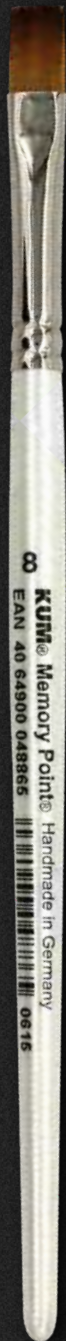
Nr	3/0	00	0	1	2	3	4	5	6	7	8	9	10	11	12	14
Hair length mm	6	7	8	9	11	13	14	16	18	20	22	24	25	29	30	30
Ø in mm	1,6	1,7	1,8	2	2,4	2,7	3	3,4	4	4,9	5,4	6	6	6,5	7	7,8



MEMORY POINT RIGGER | LINER

The long fibers of these brushes are perfect for painting extremely long and even lines. They enable precise and continuous paint application without losing shape. The finest lines can be created with the liner.

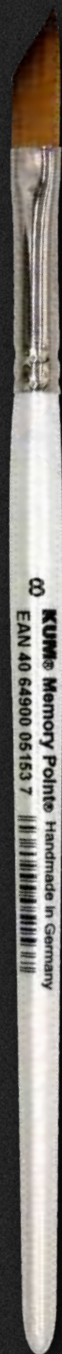
	Liner		Rigger
Nr	0	2	3
Hair length mm	17	18	30
Ø in mm	1,4	2,4	2,6



MEMORY POINT FLAT

This flat shape is ideal for applying paint evenly, covering large areas, and creating smooth glazes. Its design also allows for precise work in corners, and fine lines can be achieved using the edge.

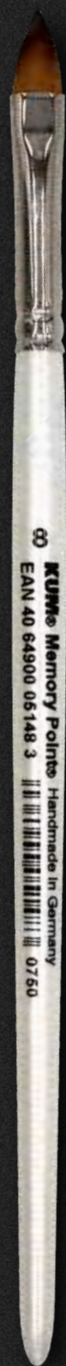
Nr	2	4	6	8	10	12	14	16	18	20	22	24
Hair length mm	8	9	11	12	13	14	16	19	22	23	26	29
Width in mm	3,2	4,5	6,3	8,4	9,9	11,8	13,3	15	16,4	17	19,4	22,4



MEMORY POINT SLANTED

The slanted brush tip offers exceptional versatility, perfect for creating a variety of strokes, from long, thin lines to angular shapes. Its slanted cut allows for precise, controlled detailing, making it ideal for painting floral motifs like leaves and roses. The flat side is perfect for covering larger areas, while the pointed tip ensures sharp edges and precise corners.

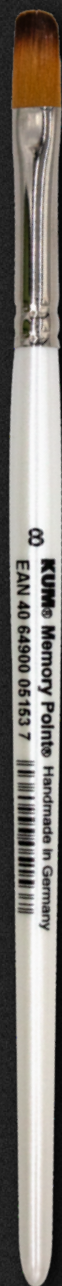
Nr	2	4	6	8	10	12	14
Hair length mm	5/11	8/14	9/19	11/22	13/24	14/27	17/29
Width in mm	3,1	4,1	6,3	8	9,3	10,7	12,8



MEMORY POINT CAT-TONGUE

The flat but pointed shape combines the advantages of the flat and round versions. This makes cat-tongue shaped brushes very versatile. The shape enables the artist to apply color evenly and create soft color transitions, as well as to paint lines and fine details. In addition, it is ideal for working out round shapes.

Nr	6	8	10	12	14	16
Hair length mm	12	14	16	19	22	25
Width in mm	5,3	7,7	9	10,3	12,3	13,9



MEMORY POINT FILBERT

The Filbert brush blends the control of a flat brush with the soft edges of a round brush. Its oval-shaped tip is perfect for creating soft, organic shapes like petals, leaves, or clouds, while the edges allow for more defined strokes. The rounded design enables seamless blending and smooth transitions.

Nr	6	8	10	12	14
Hair length mm	12	14	15	18	22
Width in mm	5,8	7,6	9	10,2	12,3



MEMORY POINT SWORD

The special brush shape is best suited for long and curved lines of varying thickness and beautiful color gradients. Extremely fine details can be realized with the fine brush tip. For longer flowers and petals, the sword brushes are the best brushes.

	Sword Flat		Sword Round	
Nr	5	8	4	8
Hair length mm	25/44	27/46	20/33	20/40
Ø in mm	5,3	7,5	3,3	6,5



MEMORY POINT TRAVEL

The ultimate tool for painting on the go: This premium travel brush combines practicality with exceptional performance. Its innovative design allows the brush to be securely stored by simply fitting the handle over the bristles, ensuring they are fully protected during transport. Compact yet versatile, this size 6 round brush is a true all-rounder. Whether for plein air painting or creative journeys.

Nr	6
Hair length mm	18
Ø in mm	4



12

KUM® French Aqua

soft



Herboltingen, Germany





KUM® FRENCH AQUA

-for wash techniques and seamless blending

An exceptional synthetic alternative to natural squirrel hair

The KUM French Aqua brush is the ultimate synthetic alternative to squirrel hair, offering unparalleled performance. Its precisely shaped tip goes beyond the abilities of natural hair, providing superior accuracy and control for stunning results. It's a game-changing tool that elevates the art of watercolor painting.



special mix of
fibre diameters



extreme
thin fibre



low shape
recovery



soft
response

Superior water and paint capacity

The French Aqua is equipped with ultra-thin synthetic fibres with different diameters and has the highest water and paint absorption capacity in the KUM collection. This feature enables long, uninterrupted brush strokes and is therefore ideal for large-scale washes and smooth color transitions.

Perfect for a variety of techniques

Whether you want to explore loose watercolor styles, soft wash techniques or urban sketching, the French Aqua Brush adapts beautifully. It was developed in collaboration with artists and offers a wide range of creative possibilities.





FRENCH AQUA

Crafted specifically for washing techniques, the French Aqua Brush is perfect for large-scale works, priming surfaces, and creating smooth color transitions. Its soft bristles are ideal for washes, gentle watercolor applications, and effortless blending.

Nr	4	6	8	10	12
Hair length mm	20	23	25	26	28
Ø in mm	4	6	8	10	12





KUM® WOOD LINE

-for exceptional precision and control at the easel

Designed for acrylic and oil painting

The KUM® Wood Line brush was specially developed for the requirements of acrylic and oil painting. Its extra-long handle improves painting at the easel and allows the artist to work from a greater distance. This extra reach improves visibility and perspective and helps to inspire new ideas for composition and image design.

Versatility in usage

Made with innovative brush fibres, the KUM® Wood Line brush is suitable for both fine contours and large areas. The unique fibres, which are produced in a special handcrafted process, enable smooth transitions and the precise application of even the smallest details.

Durability and constant performance

Thanks to the high-quality synthetic fibres, the brush retains its shape even after repeated cleaning. This ensures a consistently sharp brush tip and therefore precise and reliable performance over a long period of time.



special mix of
fibre diameters



sharp fibre
cone



high shape
recovery



medium
resistance





WOOD LINE ROUND

The smallest details can be realized with the fine brush tip. When pressure is applied, the brush widens, which means that wide lines can also be drawn. If the pressure is reduced again, the brush jumps back into its original shape. This makes the round version particularly suitable for quick transitions from fine to thick lines.

Nr	1	2	4	6	8	10	12	14
Hair length mm	9	11	14	18	22	25	30	30
Ø in mm	2	2,4	3	4	5,4	6	7	7,8



WOOD LINE FLAT

This flat shape is ideal for applying paint evenly, covering large areas, and creating smooth glazes. Its design also allows for precise work in corners, and fine lines can be achieved using the edge.

Nr	2	4	6	8	10	12	14	16	18	20	24
Hair length mm	8	9	11	12	13	14	16	19	22	23	29
Width in mm	3,2	4,5	6,3	8,4	9,9	11,8	13,3	15	16,4	17	22,4



WOOD LINE CAT-TONGUE

The flat but pointed shape combines the advantages of the flat and round versions. This makes cat-tongue shaped brushes very versatile. The shape enables the artist to apply color evenly and create soft color transitions, as well as to paint lines and fine details. In addition, it is ideal for working out round shapes.

Nr	6	8	10	12	14	16	18	20
Hair length mm	12	14	16	19	22	25	27	29
Width in mm	5,8	7,7	9	10,3	12,3	13,9	16,5	17,5



PREMIUM WATERCOLOR PAPER

300g/m²
cold pressed
29,7 x 21 cm

surface glued
acid free
natural white
age resistant

MADE IN GERMANY

100% COTTON

15

KUM® WATERCOLOR PAPER

-stable cotton surface for consistent results

Reliable cotton surface for controlled watercolor work

Made from 100 % cotton, the KUM premium watercolor paper offers a balanced surface that supports both fluid washes and precise detail work. Colors spread evenly while remaining controllable, allowing smooth transitions and clean edges.

High stability for intensive techniques

With its high grammage, the paper remains flat even with heavy washes and repeated layering. The durable structure allows lifting and reworking without damaging the surface, making it suitable for demanding watercolor techniques.

- » 100 % cotton
- » 300 g/m²
- » 29.7 x 21 cm
- » cold-pressed
- » surface glued
- » acid-free
- » naturally white
- » age resistant
- » made in Germany





WATERCOLOR PAPER

The premium watercolor paper offers a stable and reliable foundation for professional watercolor painting. Made from 100 % cotton, it provides controlled absorbency, even color flow and excellent durability, even with intensive washes and layering.

Item No. 514.99.11



**BRUSH
SOAP**

TRANSPARENT AND PINK
HAIR CARING AND FOAMING
COLOUR DISSOLVING
PALM OIL FREE
LOW FOAMING
COLOUR NEUTRAL

KUM® BRUSH SOAP

-gentle on fibres, tough on paint residues

- » 15 gr
- » suitable for waterbased colors
- » color neutral
- » transparent & pure
- » hair caring and fibre gentle
- » low foaming
- » color dissolving
- » palm oil free
- » handmade in Germany





BRUSH SOAP

The brush soap ensures clean and well-maintained brushes and extends their lifespan. Regular cleaning thoroughly removes paint residue and protects the fibres so that they remain soft and smooth. At the same time, the original shape of the brushes is preserved. The soap is gentle on the fibres and powerful against stubborn residues.

An indispensable care product that not only ensures cleanliness, but also the longevity and precision of the brushes!

Item No. 516.00.10



KUM® BRUSH SETS

Our brush sets have been specially designed to meet all creative needs - for beginners and advanced artists alike. Each set contains high-quality, synthetic watercolor brushes known for their precision and durability. In addition to the brushes, there is a theme-specific guide to provide creative inspiration and assist with technique development. These sets provide everything needed for a successful and inspiring painting experience.

Versatile performance across acrylic, oil and gouache

The specially developed synthetic fibres are designed for use with a wide range of paint media. From acrylic and oil to gouache, KUM Fjall brushes offer consistent control and flexibility when working with pasty and dense paints.

Firm synthetic fibres for precise, controlled strokes

The carefully selected synthetic fibres feature a medium to firm hardness, developed specifically for impasto techniques. Their construction ensures high shape recovery and reliable precision, even under pressure, allowing for confident and controlled application.

Comfortable handling with high paint capacity

The short handle makes the KUM Fjall brushes ideal for painting at the table, offering stability and comfort during longer sessions. A blend of different fibre diameters provides a high paint capacity, enabling richer color application and fewer reloads.



special mix of
fibre diameters



sharp fibre
cone



extreme high
shape recovery



firm
resistance





FJALL®

The brushes for modern acrylic painting.

The KUM Fjall brushes are like a majestic mountain: strong and versatile. Designed for both bold, textured strokes and delicate lines with impasto colors, these brushes are super universal.

ROUND -size 6 | FLAT -size 10 | FILBERT -size 8

Item No. 517.00.16



ESSENTIAL GOUACHE SET

This essential set of brushes is thoughtfully curated to provide a good foundation for gouache painting. Featuring a range of versatile shapes and sizes, it's ideal for fundamental techniques like layering, adding fine details, and achieving smooth gradients. A must-have for any artist's collection.

To further support the artistic journey, the set includes a guide with useful tips, tricks, and templates designed to enhance the creative process and refine the artist's skills.

Item No. 514.77.16

MEMORY POINT SLANTED -size 6

Its slanted shape offers precise control and versatility, making it perfect for handling sharp edges, layering, and covering larger areas. Its excellent paint pickup ensures smooth, streak-free application.

MEMORY POINT ROUND -size 8

A versatile brush with excellent elasticity, holding its fine point for both broad strokes and precise details. It reliably returns to its original shape, ensuring precision and control with every application.

MEMORY POINT ROUND -size 2

The small, round tip provides exceptional accuracy and flexibility, perfect for adding intricate details, fine lines, and small accents. It holds just the right amount of paint for clean and even strokes.





ESSENTIAL WATERCOLOR SET

A carefully curated selection of essential brushes that provide the perfect base for watercolor painting. With a versatile selection of shapes and sizes, this set is ideal for basic techniques such as layering, fine details and soft gradients. A must for every artist's toolkit.

The set also includes a guide with helpful tips, tricks, and templates to support the creative process and enhance technique.

Item No. 514.76.16

MEMORY POINT FLAT -size 8

It is ideal for larger areas, backgrounds and a must-have for urban illustrations. It makes soft color transitions with ease.



MEMORY POINT ROUND -size 6

A versatile brush with excellent elasticity, holding its fine point for both broad strokes and precise details. It reliably returns to its original shape, ensuring precision and control with every application.

MEMORY POINT ROUND -size 1

Perfect for painting details and fine lines. Its sharp tip makes it perfect for delicate work, from adding tiny accents to creating fine patterns and textures.



ILLUSTRATION WATERCOLOR SET

This illustration watercolor brush set is carefully designed for artists focused on detailed and precise work. Ideal for illustrative techniques, this set combines Memory Point brushes with Faded brushes, offering the best of both. It also includes a guide to support your creative process and help you refine your technique.

Item No. 514.78.16

MEMORY POINT ROUND -size 6

A versatile brush with excellent elasticity, holding its fine point for both broad strokes and precise details. It reliably returns to its original shape, ensuring precision and control with every application.

MEMORY POINT ROUND -size 00

Perfect for painting details and fine lines. Its sharp tip makes it perfect for delicate work, from adding tiny accents to creating fine patterns and textures.

FADED FRENCH RIGGER -size 4

This brush creates long, thin, and consistent lines, thanks to its high paint capacity and precision.

FADED FLAT -size 6

It is ideal for larger areas, backgrounds. It makes soft color transitions with ease.





LANDSCAPE WATERCOLOR SET

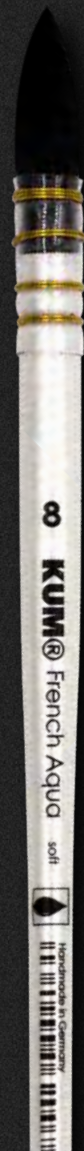
This Brush Set is the perfect combination of precision and versatility, crafted for artists who require a diverse set of tools to capture nature's beauty. With carefully selected brushes from the French Aqua, Faded, and Memory Point collections, this set offers everything needed to create stunning landscapes.

The set also includes a guide with helpful tips, tricks, and templates to support the creative process and enhance technique.

Item No. 514.79.16

FRENCH AQUA -size 8

With its exceptional water capacity and ultra-soft bristles, this brush is perfect for creating seamless gradients and smooth, flowing backgrounds.



FADED RIGGER -size 3

It is ideal for creating long, thin, and consistent lines, thanks to its high paint capacity and precision.



MEMORY POINT ROUND -size 6

A versatile brush with excellent elasticity, holding its fine point for both broad strokes and precise details. It reliably returns to its original shape, ensuring precision and control with every application.





BOTANICAL WATERCOLOR SET

Crafted specifically for botanical illustrations, this brush set features Memory Point brushes designed for fine control and intricate detailing. Ideal for capturing the delicate beauty of nature, these brushes excel in both fine line work and soft washes.

The set includes a guide with valuable tips and techniques to support the creative process, helping you refine your botanical watercolor skills.

Item No. 514.80.16

MEMORY POINT ROUND -size 6

A versatile brush with excellent elasticity, holding its fine point for both broad strokes and precise details. It reliably returns to its original shape, ensuring precision and control with every application.

MEMORY POINT RIGGER -size 3

It is ideal for creating long, thin, and consistent lines, thanks to its high paint capacity and precision.

MEMORY POINT CAT -size 8

It combines a sharp point for fine details with a broad edge for bold strokes - ideal for painting leaves and sweeping strokes.

MEMORY POINT SLANTED -size 6

The slanted shape is perfect for variations of leaf shapes and, thanks to its flat edge, for precise strokes, such as grass.





KUM® BRUSH SETS CREATORS CHOICE

We are delighted to work with talented artists who curate their personalized brush sets with us. These exclusive sets offer a unique selection of brushes that are specifically matched to the needs and preferences of the artists and themes. The collaboration creates a perfect symbiosis of expertise and creativity, allowing both beginners and experienced painters to work with high-quality equipment specifically designed for different techniques and forms of expression.



VOLANE BRUSH SET

This acrylic and oil painting brush set, developed in collaboration between KUM and Volane, features five uniquely designed brushes with long handles for enhanced control and comfort. Crafted to meet the demands of both acrylic and oil painting, this set offers everything you need for a comprehensive creative experience.

Item No. 514.75.16

ROUND -size 4

A versatile brush with outstanding elasticity, maintaining its fine point for both broad strokes and intricate details. It consistently returns to its original shape, delivering precision and control with every application.

ROUND -size 1

It is perfect for detailed work and fine lines. Its excellent elasticity allows for precise control, making it ideal for intricate details.

CAT -size 6

It combines a sharp point for fine details with a broad edge for bold strokes.

SLANTED -size 6

The slanted shape of the brush enables smooth, controlled strokes with its flat edge, offering precision in detailing and the ability to cover larger areas efficiently. This versatile brush allows for both fine lines and broader strokes.

FLAT -size 18

It is ideal for larger areas and backgrounds, effortlessly distributing paint across surfaces for smooth, even coverage.



MARIS

Volane is a contemporary artist celebrated for her provocative and unapologetically bold work. Her art often explores themes of femininity and societal taboos, incorporating striking motifs such as tampons and vulvas to challenge stereotypes and spark meaningful conversations. With a unique aesthetic and fearless approach, Volane pushes the boundaries of modern art, blending vivid imagery with thought-provoking concepts. Her work resonates deeply, inspiring reflection and discussion in both the art world and beyond.



Volane







NOSTALGIC WORLD WATERCOLOR BRUSH SET

Between heaven and earth lies a world full of color, a place where memories, dreams and feelings merge into something familiar and meaningful. Together with the artist Sue Rachel, we have created a brush set that invites you to immerse yourself in your nostalgic world.

Each brush in this set is a Creators Choice brush with synthetic KUM Memory Point fibers and was selected and designed by Sue. These brushes in this set combine expressiveness, control and precision in a harmonious balance.

All brushes are handmade in Germany.

Accompanying this, the set includes an exclusive step-by-step tutorial from Sue, in which she takes you through a illustration and shows you how she paints every single step.

Paint with pleasure, paint your world.

Item No. 514.86.19

ROUND ,WORLD' -size 7

It holds a wonderful amount of water and is ideal for large areas. It's tapered tip allows for precision to get into corners perfectly with the first wash.

ROUND ,STARS' -size 00

The wash brush Faded French Round is an excellent brush for backgrounds and bigger areas. Because it can store a lot of water and color, it is wonderful for abstract and loose painting.

LINER ,MOON' -size 2

The liner stores more water and paint than you would expect at first glance. It is the best brush for long, fine lines and details.

FLAT ,PLANET' -size 4

The flat brush is also a great choice for urban watercolor. Size 4 is very suitable for working out angular shapes, such as windows, with a few brush strokes and for adding details and patterns to the illustration, such as bricks or fence posts.





KUM

Since 1919
Made in Germany

Watercolor

Watercolor Brush Set
nostalgic world

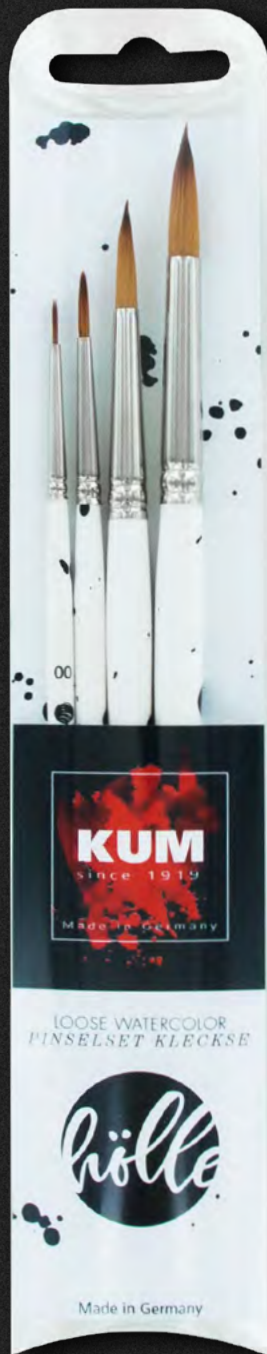
Made in Germany



SUE

Sue, known as @sue_rahel is a German-Italian illustrator known for her gentle, nostalgic watercolors. She combines poetic motifs with a deep personal visual language that is strongly influenced by memories and her Christian faith. Since 2018, she has dedicated herself intensively to watercolor painting and inspires a steadily growing community with her dreamy illustrations.

Sue
Rahel



WATERCOLOR BRUSH SET

We have a deep love for artistic expression and an appreciation for beautiful brushes! That's why we collaborated with lettering and watercolor artist Frau Hölle to create four unique blot brushes. Each brush is hand-sprinkled with black splashes, making it truly one of a kind. Crafted with high-tech synthetic fibers, these brushes feature perfectly round tips, enabling precise detail work and effortless handling, no matter the size.

Item No. 514.37.16

MEMORY POINT ROUND -size 6

A great all-rounder, this medium-sized brush balances precision and broader coverage, making it perfect for layering, soft transitions, and medium-scale details.

MEMORY POINT ROUND -size 8

Designed for larger areas and bold strokes, this versatile round brush provides excellent color retention, making it ideal for larger areas, shading, and expressive line work.

MEMORY POINT ROUND -size 2

Ideal for refined detailing and controlled strokes, the size 2 round brush offers versatility in creating smooth lines and subtle textures, making it a staple for both detail and small-area coverage.

MEMORY POINT ROUND -size 00

Perfect for ultra-fine details and delicate line work, this small round brush excels in precise tasks like highlights, intricate patterns, and adding finishing touches to your artwork.



TANJA

Tanja „Frau Hölle“ Cappell is a Munich-based lettering and watercolor artist known for her creative workshops and books. With a focus on modern calligraphy, brush lettering, and illustration, she shares her passion for art through inspiring tutorials and workshops. Tanja's work encourages others to explore their creativity and discover new techniques, with a special emphasis on mindfulness through art.







COSY WATERCOLOR SET

The variety of brushes in this set allows you to create beautiful hygge loose watercolor illustrations - matching my book „Cosy Watercolor“.

The included faded brushes (flat size 8 & french rigger size 4) are perfect for loose backgrounds and areas, as well as for painting in the wet-on-wet technique. With the two Memory Point round brushes sizes 3/0 and 4, you can then create and embellish the illustrations in great detail.

But that wasn't all by a long shot. A total of 4 project ideas from the Interior Watercolor and Urban Watercolor themes are waiting for you in the matching guide to the brush set. Simply scan the QR code at the bottom of the packaging. Bring your Hygge Watercolor feeling home.

Item No. 514.70.16

FADED FRENCH RIGGER -size 4

This brush combines long bristles with excellent water capacity, making it perfect for painting flowing strokes, loose washes, and delicate linework.

FADED FLAT -size 8

It is an ideal brush for covering larger areas and creating soft, fluid backgrounds. Its wide, flat bristles make it perfect for smooth color transitions and working with the wet-on-wet technique. A must-have for loose watercolor washes.

MEMORY POINT ROUND -size 4

A versatile round brush in size 4, designed for creating small areas and details. Its sharp tip offers excellent control for adding refined elements to your artwork, while still being capable of handling slightly larger spaces.

MEMORY POINT ROUND -size 3/0

The ultra-fine size 3/0 brush is perfect for intricate details and precise embellishments. Its sharp point ensures that even the tiniest accents, fine textures, and delicate patterns can be achieved with ease.







LENA

Lena Ullmann, known as @pinsel.yoga on Instagram, is an artist with a passion for watercolor painting. In 2018, she discovered her passion for bullet journaling, which soon expanded to lettering and loose watercolors. Her latest book, *Cosy Watercolor*, shares the same name as her brush set and inspires artists to express their creativity in a relaxed and joyful way.

pinsel.yoga



URBAN WATERCOLOR SET

For urban watercolor illustrations, such as little cottages, Isabella has put together the perfect brush set of four high-quality KUM Faded brushes. The set includes Faded French Round size 8, Faded Round size 6, Faded Flat size 4 and the Faded Liner size 2.

In addition, the set includes four digital urban templates by Isabella for downloading!

Item No. 514.69.16

FADED ROUND -size 6

The perfectly shaped brush tip of the round brush size 6 allows you to paint large and small areas as well as thin lines and details. An absolute all-rounder!

FADED FRENCH ROUND -size 8

The wash brush Faded French Round is an excellent brush for backgrounds and bigger areas. Because it can store a lot of water and color, it is wonderful for abstract and loose painting.

FADED LINER -size 2

The liner stores more water and paint than you would expect at first glance. It is the best brush for long, fine lines and details.

FADED FLAT -size 4

The flat brush is also a great choice for urban watercolor. Size 4 is very suitable for working out angular shapes, such as windows, with a few brush strokes and for adding details and patterns to the illustration, such as bricks or fence posts.

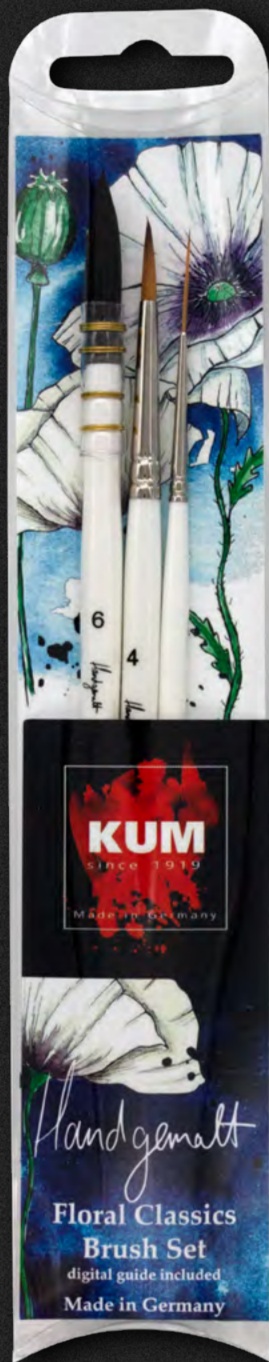


ISABELLA

Isabella Stollwerk, known as @_paperieur_ on Instagram, is an artist known for her distinctive urban watercolor illustrations. Her work captures the charm of architectural motifs and vibrant street scenes with skillful details and a personal touch. As the author of several books, she shares her expertise and passion, inspiring artists to explore the beauty of everyday surroundings with watercolor.







FLORAL CLASSICS BRUSH SET

Together with Anastasia Sälinger we developed the Floral Classics Brush Set. This set includes three high quality watercolor brushes. The selected assortment of French Aqua Size 6, Memory Point Liner Size 0 and Memory Point Round Size 4 is the perfect combo for painting a wide variety of floral illustrations.

In the included guide, Anastasia provides a detailed step-by-step explanation of her techniques, highlighting the unique advantages of each brush in the set. Spanning over 20 pages, the guide offers essential information about watercolor painting, along with two tutorials: one focused on painting flowers and another on creating stunning watercolor backgrounds. Additionally, it includes plenty of floral inspiration.

Item No. 514.68.16

FRENCH AQUA -size 6

Designed for expansive washes and smooth transitions, this brush is a must-have for creating backgrounds and blending colors effortlessly. Its soft, absorbent bristles hold a generous amount of water and pigment, allowing for consistent application and seamless gradients. Perfect for adding depth and softness to your watercolor artwork.



MEMORY POINT ROUND -size 4

A versatile round brush in size 4, designed for creating small areas and details. Its sharp tip offers excellent control for adding refined elements to your artwork, while still being capable of handling slightly larger spaces.

MEMORY POINT LINER -size 0

A brush that is perfect for creating ultra-fine lines and intricate details. Its design allows for exceptional control and is therefore ideal for hatching, fine accents and precise fine work.





ANASTASIA

Anastasia Säliger, known on Instagram as @handgemalt, is an accomplished artist celebrated for her elegant watercolor techniques. With a focus on blending traditional and modern watercolor styles, her work often integrates fine liners to create intricate details. Based in Germany, she has authored several books that guide enthusiasts through floral and artistic designs, showcasing her expertise and love for creative expression. Her work is a source of inspiration for many in the watercolor and illustration community.

Handgemalt



BRUSHLETTERING SET

The KUM Memory Point Brush is ideal for brush lettering due to its exceptional properties. Its ability to produce both thin and thick lines in a single stroke expands creative possibilities for artists. Varying pressure creates diverse effects, while the precisely shaped tip excels in detailing even the smallest lines. The brushes' high resilience and shape stability ensure that fibres consistently return to their original form, avoiding stray fibers that might cause unintentional marks or stains.

Item No. 511.94.16

MEMORY POINT ROUND -size 6

This brush is ideal for lettering of all sizes, providing the perfect balance between precision and coverage. Whether you're working on larger compositions or creating intricate letterings, this versatile brush offers exceptional control and smooth application, making it an essential tool for any brush lettering project.



MEMORY POINT ROUND -size 3

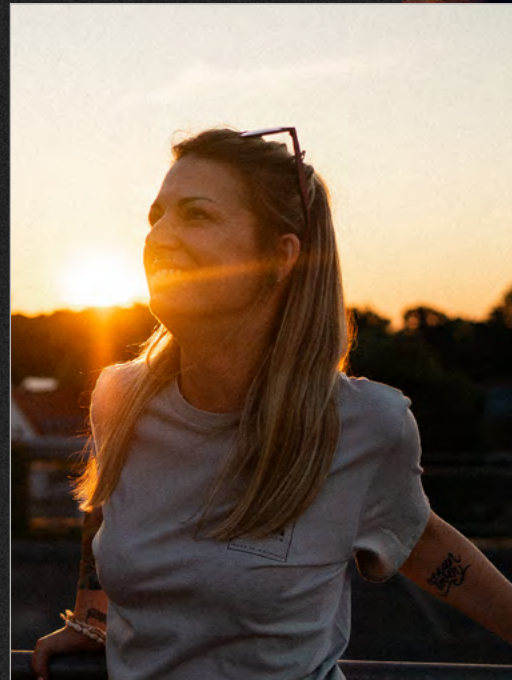
Designed for finer letterings, shading, and decorative elements, the Size 3 brush allows for detailed strokes and subtle transitions. Its fine tip ensures precision, making it perfect for intricate work and delicate flourishes, adding depth and elegance to your designs.

MEMORY POINT ROUND -size 1

The Size 1 brush is perfect for highlights and outlines, offering the precision needed for intricate details. Its fine, sharp point allows for clean, crisp lines, ideal for accentuating key features in your lettering or adding delicate decorative touches to your artwork.

NADINE

Nadine Siebensohn, known on Instagram as @lellousletters, is an artist with a passion for brush lettering and watercolors. Her work combines creative precision with artistic playfulness and focuses on expressive lettering techniques. Her distinctive style has made her a popular figure in the lettering and watercolor community.



lellousletters



create



KUM

MADE IN GERMANY

BEST QUALITY & PRECISION SINCE 1919



KUM® ART SHARPENERS

-excellence in pencil sharpening

Unmatched craftsmanship -made in Germany

KUM sharpeners stand as a hallmark of superior German engineering. Crafted with precision, these sharpeners are made for discerning artists and professionals who demand the best. Equipped with razor-sharp, ultra-hard steel blades (65 HRC), KUM sharpeners offer

unparalleled performance. These blades are harder than even the finest knives, making them ideal for the sharpening of pencil leads, which consist of graphite and clay, a combination that can be incredibly tough to work with.



Dynamic Torsion Action® - Innovating sharpening technology

KUM is the only manufacturer globally to equip its sharpeners with a uniquely curved blade. This innovative design ensures that the cutting edges remain under constant tension, preventing them from curling or bending under the pressure during sharpening. As a result, the

pencil tip remains intact, preventing any unwanted cracking or splintering. Additionally, the pressure against the screw-head prevents it from lifting or loosening, ensuring the sharpener's longevity and consistent performance.

Precision sharpening with magnesium

To achieve the utmost precision, KUM sharpeners are produced using magnesium, a material known for its exceptional ability to hold tight tolerances. This guarantees a flawless sharpening result every time. Magnesium's lightness and strength make it the perfect

material for manufacturing high-precision tools, allowing KUM sharpeners to achieve the level of quality that artists and professionals expect.





WALDMEISTER®

The term „Waldmeister“ carries a variety of meanings in the German language. For many, it refers to a plant that thrives in the depths of the forest. However, for us, the combination of „Wald“ (forest) and „Meister“ (master) signifies the perfect fusion of nature's beauty with meticulous craftsmanship, elegance, and sustainability.

This high-quality two-hole pencil sharpener, like all KUM sharpeners, features a blade made of high carbon steel, enhanced by our Dynamic Torsion Action System. The body and lid are crafted from beech wood sourced from sustainably managed forests that adhere to strict reforestation guidelines.

The striking matte glass container with its suede surface, paired with the beech wood lid, makes this sharpener not only a functional tool but a piece of elegance and sophistication, exemplifying the highest standards of design and quality.



Item No. 107.10.11
PU 1 pcs., Carton 1 pcs.





GLASS

The elegant glass container with its magnesium sharpener offers a perfect blend of timeless design and exceptional functionality. The high-quality materials ensure durability, while its sleek appearance adds sophistication to any workspace.



Item No. 106.47.11
PU 15 pcs., Carton 150 pcs.





9 MM

The 9 mm sharpener for pastel pencils is designed to achieve a fine, sharp point with a regular cone shape. Specifically crafted for pastel pencils, this sharpener preserves the delicate pastel cores while providing excellent control during use.



Item No. 105.75.17
PU 50 pcs., Carton 650 pcs.





SHORT CONE SHARPENER

The ideal short-cone sharpener for porous and powdery pencil leads, this sharpener is an essential tool for artists dedicated to working with standard 8 mm wooden pencils.

This innovative sharpener features the unique TipFormer System, which allows for precise customization of the pencil tip—round or pointed—by simply inserting or removing the stick. Additionally, the TipFormer doubles as a cleaning tool for the premium Dynamic Torsion Action Blades, crafted from high-carbon steel for exceptional durability and performance.

Ergonomically designed for effortless handling, the KUM® short cone sharpener ensures a seamless user experience. Its „Click“ waste container opens with a gentle squeeze of the sharpener's body, combining functionality and convenience in an artist-friendly design.



Item No. 105.74.11
PU 10 pcs., Carton 760 pcs.





ART SHARPENERS SET

This Set is a versatile and comprehensive solution for artists. Whether refining realistic pencil drawings, working with delicate pastel pencils, or crafting quick sketches, this set includes the perfect sharpeners for any medium. Each tool is expertly designed to meet the highest standards of precision and quality.

With its carefully selected range of sharpeners, this set delivers unmatched reliability, making it an indispensable choice for artists who value precision and craftsmanship in their creative process.

Item No. 105.75.16
PU 1 pcs., Carton 1 pcs.

BRASS SHARPENER

Crafted from high-quality brass, this sharpener combines durability with exceptional performance. Equipped with KUM's patented Dynamic Torsion Action blades.



AS3

Designed for detailed precision, this sharpener delivers extra-long pencil tips through a two-step process: first shaping the wood and then the lead. An automatic stop prevents over-sharpening at both stages, ensuring consistent results.



SHORT CONE SHARPENER

Ideal for powdery leads, offering round or pointed tips with the innovative Tipformer system.





from left to right: Standard
cone (400-1K), Long cone
(AS3), Extreme long cone
(Meisterwerk)



KUM® LONG CONE SHARPENERS

-Precision for Professionals



A Perfect Angle for Precision

KUM's Long Cone Sharpeners are a favorite choice among artists, designers, and architects. The unique blade design creates an exceptionally sharp angle when sharpening the pencil, resulting in an extremely long, fine point. This precision allows for the drawing of tiny details and intricate lines with ease, making it the ideal tool for fine art, sketching, and technical drawing.



400-5L

Magnesium-Stenograph, one-step long cone sharpener for extra long pencil tips, creates a cone of 10 degrees.



Item No. 104.06.01
PU 24 pcs., Carton 1968 pcs.



202-24

Stenograph, one-step long cone sharpener for extra long pencil tips, creates a cone of 10 degrees, includes a replacement blade.



Item No. 303.57.21
PU 12 pcs., Carton 1344 pcs.



AS2

Two-step long cone sharpener for extra long pencil tips. In step 1, only the wood is sharpened until the lead touches the automatic stop. Further sharpening is not possible. In phase 2, the lead is now precisely shaped. Creates a cone of 9 degrees, includes two spare blades.



Item No. 105.30.21
PU 15 pcs., Carton 480 pcs.



AS2M

Two-step long cone sharpener for extra long pencil tips. In step 1, only the wood is sharpened until the lead touches the automatic stop. Further sharpening is not possible. In phase 2, the lead is now precisely shaped. Includes leadpointer for 2 mm and 3,15 mm leads, creates a cone of 9 degrees, includes two spare blades.



Item No. 105.31.21
PU 15 pcs., Carton 480 pcs.



AS3

Two-step long cone sharpener for extra long pencil tips. In step 1, only the wood is sharpened until the lead touches the automatic stop. Further sharpening is not possible. In phase 2, the lead is now precisely shaped. Creates a cone of 9 degrees, includes two spare blades.



Item No. 105.55.11
PU 26 pcs., Carton 832 pcs.





MEISTERWERK®

The KUM® Meisterwerk is a premium sharpener crafted from light-weight magnesium with durable high-carbon steel blades, offering exceptional precision and longevity. Handmade in Germany and subjected to multiple quality checks, it ensures flawless performance and professional results. Designed for artists and professionals, it delivers precise, long-cone sharpening ideal for detailed and creative work. Creates a cone of 8 degrees, includes two spare blades.



Item No. 105.72.11
PU 10 pcs., Carton 240 pcs.



Crafted from high-tech materials

The KUM® Meisterwerk sharpener is made from lightweight yet robust magnesium, a material that ensures the perfect alignment and fit of its blade. Crafted from high-carbon steel with a hardness exceeding 65 HRC, the blade outperforms even the finest kitchen knives. This extraordinary durability guarantees sharp, consistent results and long-lasting performance.

Advanced blade technology

The Meisterwerk features KUM's exclusive Dynamic Torsion Action® system. This innovation places the blade under constant tension, preventing the pencil tip from breaking during sharpening. This ensures smooth, precise sharpening, ideal for achieving professional-grade results.

Customizable precision

A sliding stopper mechanism allows the user to control the amount of exposed pencil lead, offering greater versatility. This stopper can be completely removed, allowing the lead to be exposed as far as desired. The Meisterwerk adapts seamlessly to your creative needs, offering unparalleled control and flexibility.



Handmade excellence

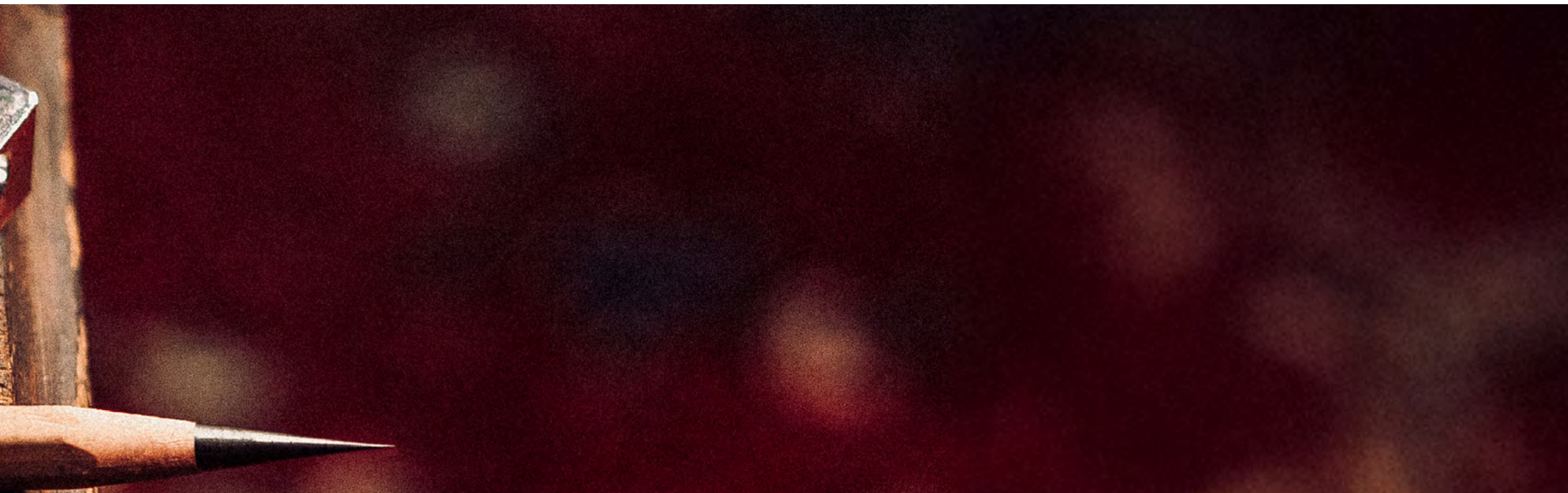
Each KUM® Meisterwerk sharpener undergoes a rigorous eight-stage quality control process, ensuring perfection at every step. From blade construction to final assembly, every detail is meticulously crafted in Germany, resulting in a sharpener that embodies precision and durability.

A new standard in long-cone sharpening

This two-phase sharpener is engineered for unparalleled accuracy. Phase one removes the pencil's wood casing with a Thin Cut system, while phase two meticulously shapes the lead into a sharp, conical tip at an 8-degree angle. The result is a precise, long pencil point.

Elegance in presentation

The Meisterwerk sharpener comes encased in a protective neoprene pouch, and presented in an elegant wooden box, making it a true collector's item for any artist, designer, or enthusiast.



www.kum.net

PRODUCT SAFETY AND REGULATIONS Our products should not only be fun and fullfill their function perfectly but should also be safe. It may have harmful effects when humans put products in their mouth than contain phthalates. A study by the Department of Environmental Medicine of the University of Erlangen has proven this. Tests showed that phthalates have an effect on the hormonal balance. Small children are especially sensitive. KUM® has paid close attention for many years to produce products without such harmful substances. Please inform your customers about this.

REACH We adopt the status of a downstream user and also, in one case, as importer, for the supply chain described within the REACH-Regulations. The pre-registration has been submitted.

DIN EN 71-3 All our products are in accordance with the regulations defined in EN 71-3.

PACKAGING Our sales and transport packaging are in accordance with the new packaging law (VerpackungG) valid as of 01.01.2019.

We reserve the right to change prices, packaging and colors due the economic necessity or necessary ecological adjustments.



Screw cap



Click-Closure



Dynamic Torsion
Action



Long point



Round point



Regular point



Lead



Wood



Magnesium



